

# Animals in Yagiyama Zoological Park

## African Animal Park

African Animal Park, which mimics African grassland and landscapes, is home to about 8 species of African animals including giraffes, African elephants, hippopotamus, rhinoceros, Abyssinian colobus, and flamingos. Visitors can observe animals in an environment that closely resembles their natural habitat.



African elephant, Giraffe, Zebra



Hippopotamus



Black rhinoceros



Flamingo

## Wild Animal Enclosure

In the Wild Animal Enclosure, visitors can admire iconic animals from three different climatic regions in the world: lions (from the savanna), Sumatran tigers (from the tropical rainforest), and polar bears (from the tundra). With only a glass window between them, visitors can observe these majestic creatures living freely in nature through the lens of animals.



Polar bear



Sumatran tiger

## Petting Farm (Petting Center)

You can pet guinea pigs and goats and feed them (feeding experience is available for an additionally charge). Macaws and other birds flying freely and cute capybaras bathing in the pool are must-see attractions of the park.



Guinea pig



Macaw (free flight performance)

## Opening Hours / Closed on

### Opening Hours

- From March to October, 9:00 a.m. to 4:45 p.m. (Last entry at 4:00 p.m.)
- From November to February, 9:00 a.m. to 4:00 p.m. (Last entry at 3:00 p.m.)

### Closed on

- Wednesdays (The following Thursday if Wednesday is a national holiday)
- From December 28 to January 4

## Admission fee / Parking fee

|                        | Adults  | Elementary school / Junior high school students | Preschoolers |
|------------------------|---------|---|--------------|
| Individual             | 480 yen | 120 yen   | Free         |
| Groups (of 30 or more) | 380 yen | 90 yen  | Free         |

- Yearly Pass 1,200 yen
- Parking fee for standard-sized car / the first 30 minutes of parking is free. After that, 100 yen is charged every 30 minutes (maximum limit 500 yen) Bus / 1,000 yen per use
- ※Carpark spaces are limited. Please use public transportation.

## Announcements

### Eateries / Shops

In addition to eateries, there are a variety of shops in the park.

### Baby stroller (paid service)

Rental service is available at the shop by the entrance.

### Wheelchair (free of charge)

Lending service is available at the admission ticket office.

### If you sustained an injury or fell ill suddenly /

If you want to make an announcement about lost property or missing child Please inform staff of the nearest shop, eatery or at the admission ticket office.

### Rest area

There is a rest area at Petting Farm.

## Access

A 2-minute walk from Yagiyama Zoological Park Station via the Tozai Subway Line.

Please use the subway services on Saturdays and Sundays

[Registration of Animal Handling Business]

○Name of representative person: KOHRI Kazuko ○Name of place of business / Sendai Yagiyama Zoological Park  
○Address of place of business / 1-43 Yagiyama-honcho, Taihaku-ku, Sendai City ○Category of Type I Animal Handling Business / Exhibiting, Selling, and Lending ○Registration number / Exhibiting: 1107 / Selling: 101052 / Lending: 101053 ○Date of registration / Exhibiting: March 12, 2007 / Selling and lending: March 17, 2017  
○Expiration date of period of registration / Exhibiting: March 11, 2027 / Selling and Lending: March 16, 2027  
○Responsible person for animal handling / HASHIMOTO Wataru

## Inquire



ハ木山動物公園 フジサキの杜

YAGIYAMA ZOOLOGICAL PARK

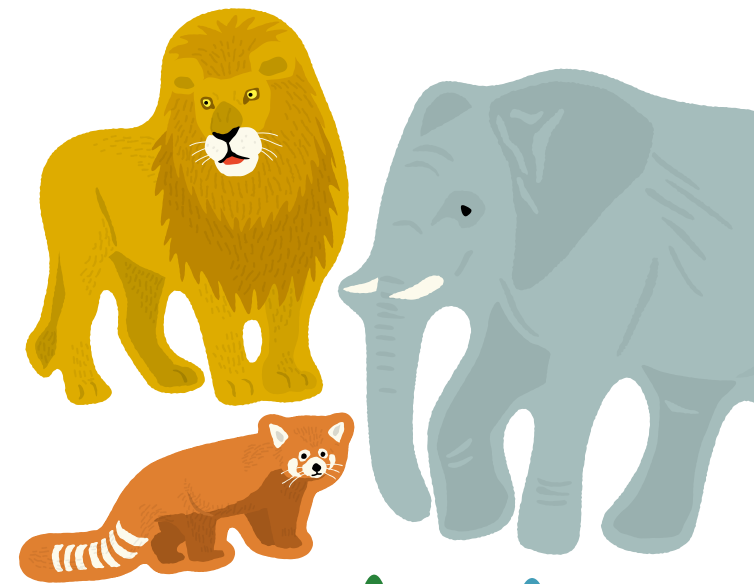
1-43 Yagiyama-honcho, Taihaku-ku, Sendai City, 982-0801

TEL.022-229-0631 FAX.022-229-8419 <https://www.city.sendai.jp/zoo/>

< Official website >



< You Tube >



YAGIYAMA ZOOLOGICAL PARK

フジサキの杜





# 八木山動物公園 フジサキの杜

YAGIYAMA ZOOLOGICAL PARK

