

# GUIDE TO THE SENDAI CITY MUSEUM



# SENDAI CITY MUSEUM

## General Information

Hours	9:00 a.m. – 4:45p.m. (Last entry at 4:15 p.m.)		
Closed	◎Mondays (excluding national holidays or substitute holidays) ◎Days after national holidays or substitute holidays. (The museum stays open if these fall on Saturday, Sunday, or on national holidays. Additionally, the museum also stays open the day following the second Monday in October, which is a national holiday.) ◎From Dec 28th – Jan 4th		
Admission Fees for the Regular Exhibitions		Individual	Groups (of 30 or more)
	Adults / College Students	¥460	¥360 per person
	High School Students	¥230	¥180 per person
	Elementary and Junior High School Students	¥110	¥90 per person

※Additional fees are provided for special exhibitions.

### Volunteer Museum Guides

Japanese volunteer guides from the Sannomaru-kai are available to take small groups on a guided tour of the regular exhibitions. Feel free to contact us for more details about the service. If you require an English-speaking guide, please make a reservation by contacting the museum at least one week prior to your visit.

### Wheelchair and Baby Stroller Accessibility

We have ramps installed in front of the main entrance, as well as an elevator. Please feel free to avail also of our free wheelchair and baby stroller rental service.

### Accessible Restroom

1st floor below the main stairs: Ostomy-friendly, wheelchair-accessible and equipped with high chairs.  
 2nd floor exhibition area: Wheelchair-accessible and equipped with high chairs.

### For Those with Small Children

A nursery is available for mothers who wish to breastfeed their children or change their diapers.

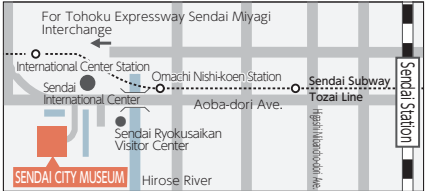
Sendai City Museum Tomo-no-kai (Members' Club)

Members of the Tomo-no-kai may view the feature and regular exhibitions free of charge (members can view special exhibitions twice free of charge (the third time and after, their admission fees will be halved)). Additionally, members will receive regular newsletters and notifications on special events. Please contact the Tomo-no-kai Office (located inside the museum) if you have any inquiries.

歴史と文化を未来につなぐ  
— 観る、知る、楽しむ。学んで、考える博物館 —

仙台市博物館  
SENDAI CITY MUSEUM

Address: 26 Kawauchi, Aoba-ku, Sendai 980-0862  
 <Site of Sannomaru, Sendai Castle>  
 TEL: 022 (225) 2557 (Representative) FAX: 022 (225) 2558

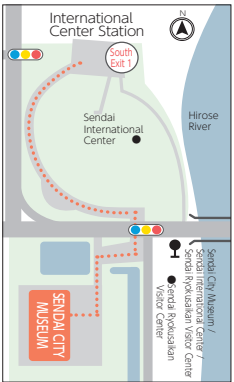


- ### Transportation Access
- Sendai City Subway: Get off at the International Center Station on the Tozai Line, leave through South Exit 1 and walk for 8 minutes.
  - Sendai Sightseeing City Loop Bus (Loope Sendai): 20 minute ride from Stop 16 at the Sendai Station West Exit Bus Terminal. Get off at Sendai City Museum/ Sendai International Center/ Sendai Ryokusaikan Visitor Center and walk for 3 minutes.
  - About 15 minutes from Sendai - Miyagi Interchange
  - Parking lot is available for 50 standard cars and 4 buses

Inquiries

[ Sendai City Museum Library and Information Center ] [ Sendai City Museum (Representative) ]

☎ 022 (225) 3074 ☎ 022 (225) 2557



web site

Recycled paper used

## Rules

Visitors require an admission ticket to view the displays in the exhibition space.

Please set mobile phones to silent mode when in the exhibition rooms. Please also refrain from making phone calls inside the rooms.

Please do not use any writing utensils other than a pencil in the exhibition rooms.

Smoking is prohibited in the museum. Please use the designated outdoor smoking area.

Rules for photography are set individually for the exhibition rooms. Please confirm the rules at the museum.

You may not re-enter the exhibition area once you have left. If you have to leave the exhibition area temporarily to use facilities on the premises, please ask a staff member for permission.

No eating and drinking in the exhibition area (including candy and gum).

Children under six years of age must be accompanied by their guardians.

In order to protect cultural properties, we use dimmed lights and set the temperature and humidity of the room to optimal levels. Items on display are frequently changed and sometimes certain rooms are closed temporarily. Please feel free to inquire with us for details on displays, etc.

# 2F

Second Floor

## Collection Exhibition Room I



Ancient dolls, pottery and tea utensils from the Tohoku region are displayed here.

## Temporary Theme Exhibition Room

Exhibitions on a variety of topics are displayed in this room.



## Historical Exhibition Room

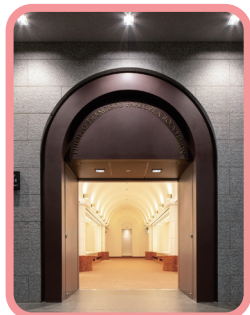


This collection is divided into six sections that trace the history of Sendai as follows: "Early Sendai," "Toward the Age of the Samurai," "Sendai Castle," "Sendai-Han," "Sendai Castle Town" and "Steps to a modernized City."



**Theme Exhibition Room I**  
[Arms and Armor of the Sendai Domain]  
Armor and weapons used by the Sendai Domain are on display here, most notably armor and helmets worn by its leaders, including Date Masamune's suit of armor, an Important Cultural Property. (Please note this room may be closed during special exhibitions.)

**Theme Exhibition Room II**  
[The Keicho-era Mission to Europe]  
This room is focused on the Materials Related to the Keicho-era Mission to Europe (a UNESCO Memory of the World and National Treasure), brought to Japan from Europe by Hasekura Tsunenaga. (Please note this room may be closed during special exhibitions.)



## Theme Exhibition Room II



## Collection Exhibition Room II



Paintings are displayed according to various topics (Please note this room may be closed during special exhibitions.)

## Play Museum

Visitors can experience the history and culture of Tohoku by playing with traditional toys such as *sugoroku-ban* (a dice board game) or *kaiaiwase* (a shell-matching game). Various events are also held here.



## Museum Shop

Popular original goods are sold here, as well as exhibition catalogues and issues of Sendai City Chronicles.

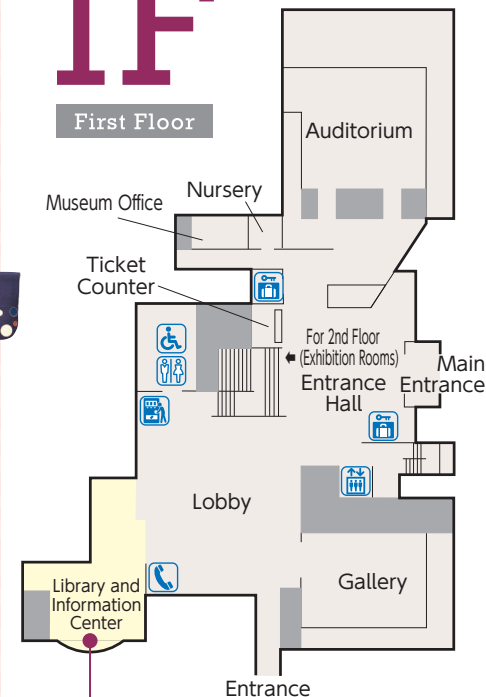


## Restaurant

Please enjoy our seasonal special menus along with the beautiful window views that change each season.

# 1F

First Floor



## Library and Information Center

Some 6,000 documents on Japanese history, culture and art may be viewed here.



- Restroom
- Elevator
- Accessible Restroom
- Coin Lockers
- Vending Machine
- Public Phone